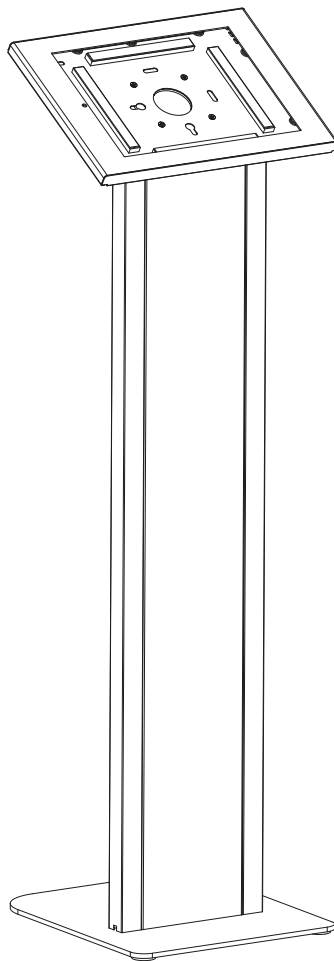



# MANUAL DE INSTALACIÓN



**SKU: PAD3203**

EN  Read the entire instruction manual before you start installation and assembly. If you have any questions regarding any of the instructions or warnings, please contact your local distributor for assistance.

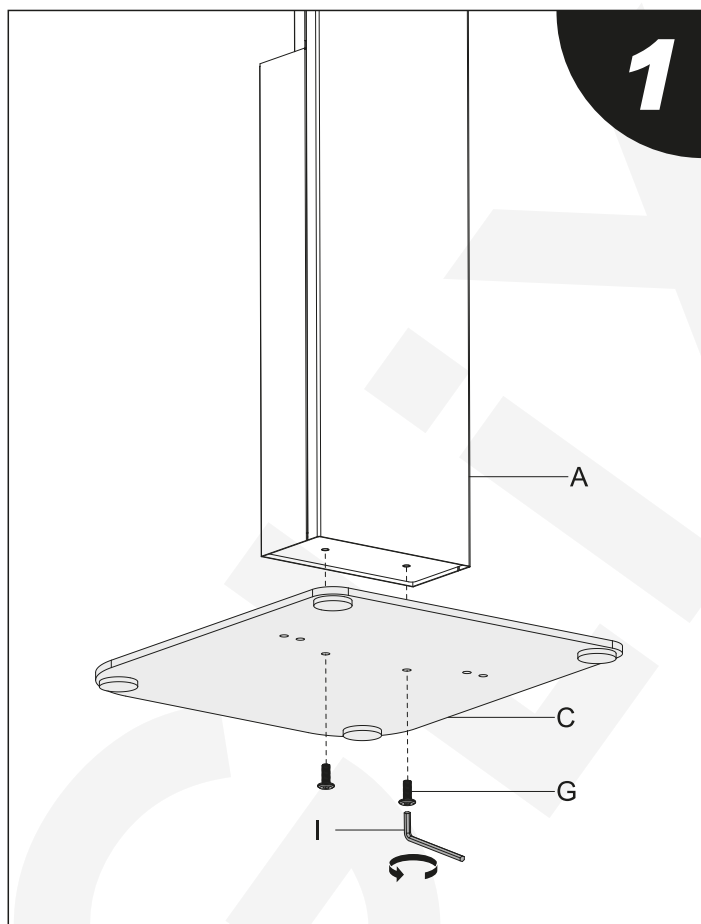


- CAUTION:** Use with products heavier than the rated weights indicated may result in instability causing possible injury.
- Mounts must be attached as specified in assembly instructions. Improper installation may result in damage or serious personal injury.
  - Safety gear and proper tools must be used. This product should only be installed by professionals.
  - Make sure that the supporting surface will safely support the combined weight of the equipment and all attached hardware and components.
  - Use the mounting screws provided and DO NOT OVER TIGHTEN mounting screws.
  - This product contains small items that could be a choking hazard if swallowed. Keep these items away from children.
  - This product is intended for indoor use only. Using this product outdoors could lead to product failure and personal injury.

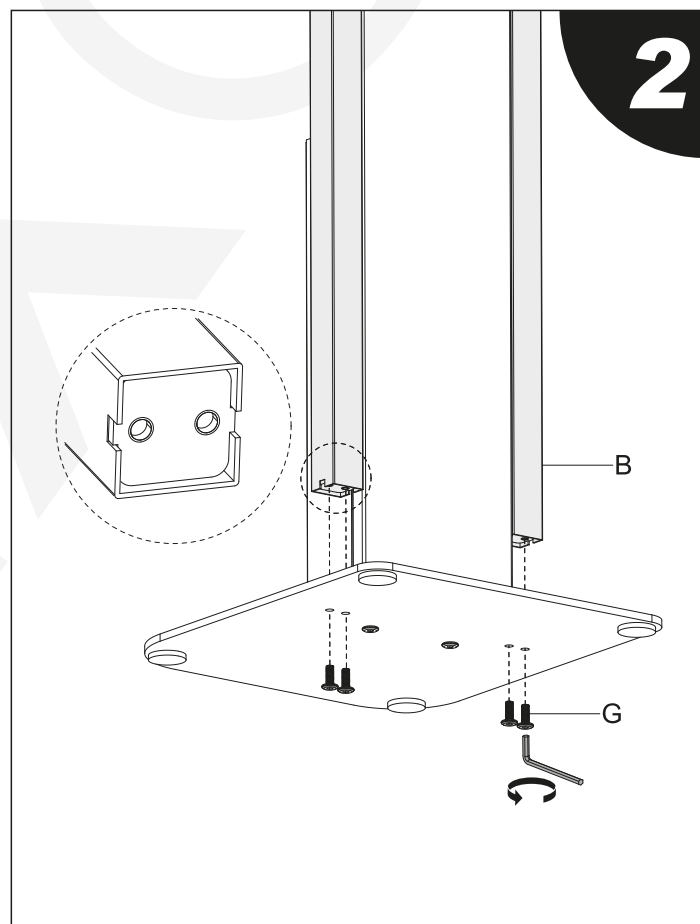
**IMPORTANT:** Ensure that you have received all parts according to the component checklist prior to installation. If any parts are missing or faulty, telephone your local distributor for a replacement.

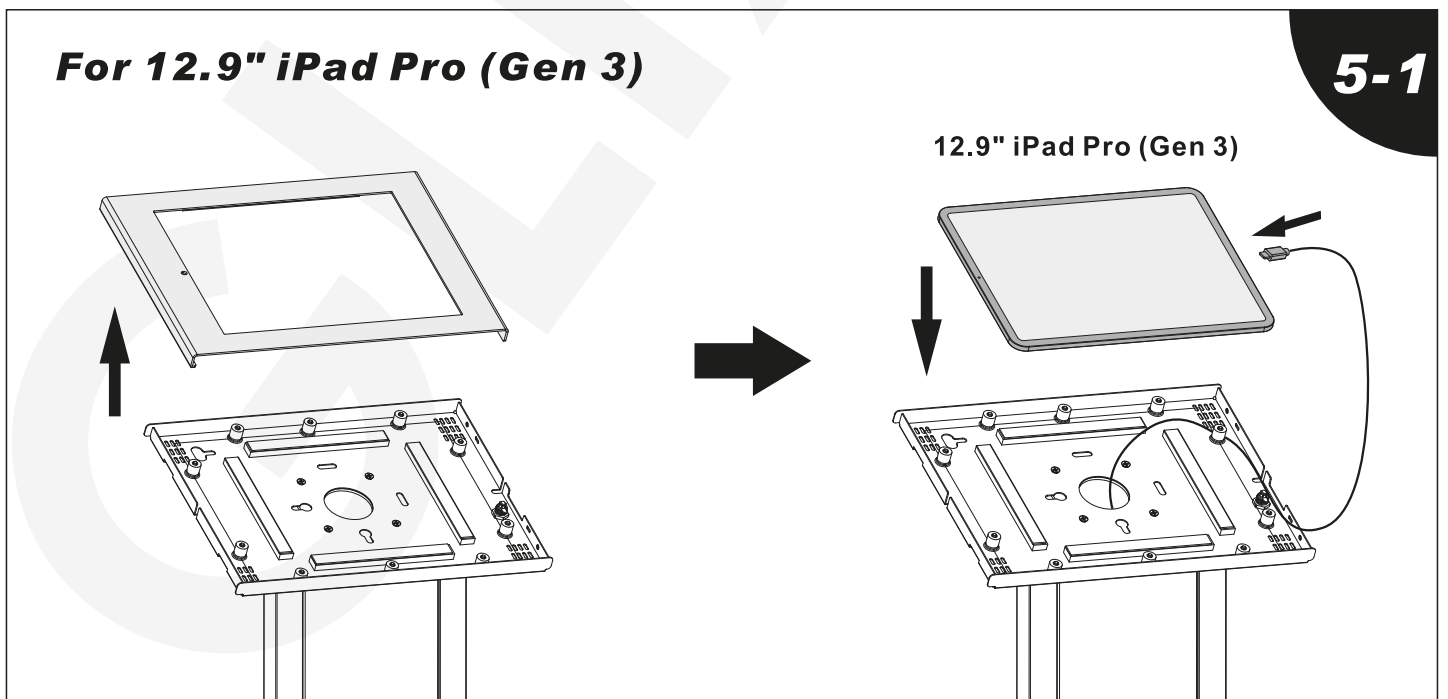
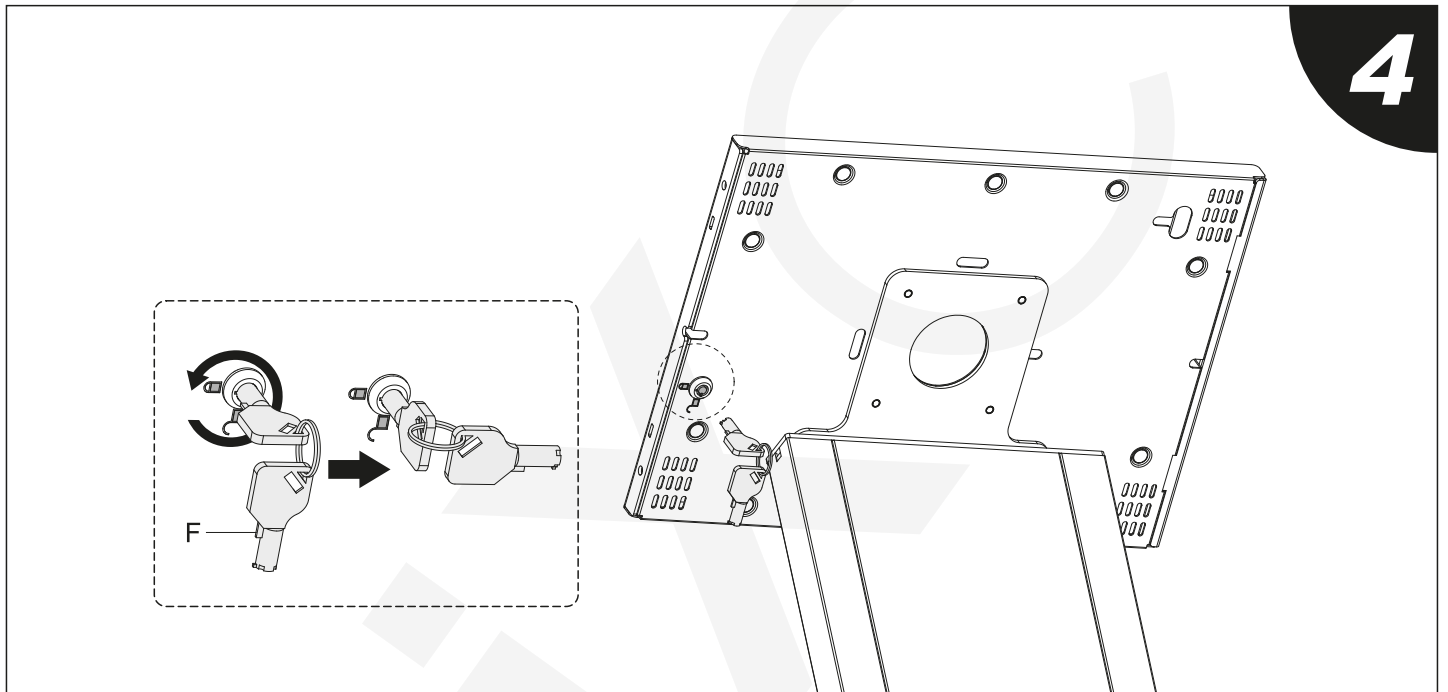
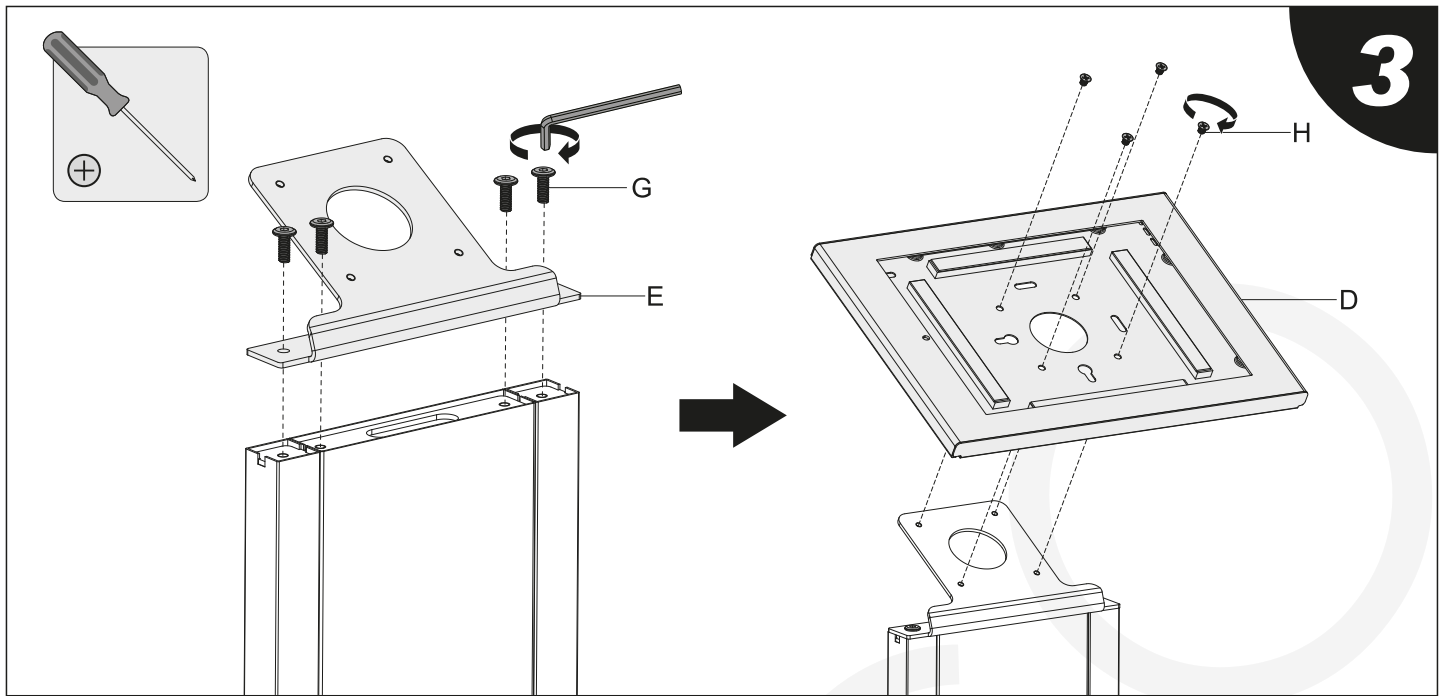
**MAINTENANCE:** Check that the bracket is secure and safe to use at regular intervals (at least every three months).

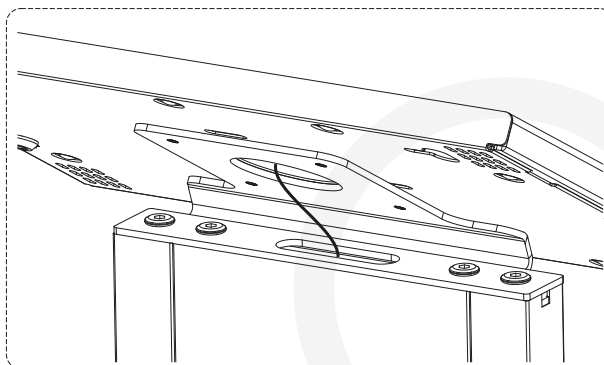
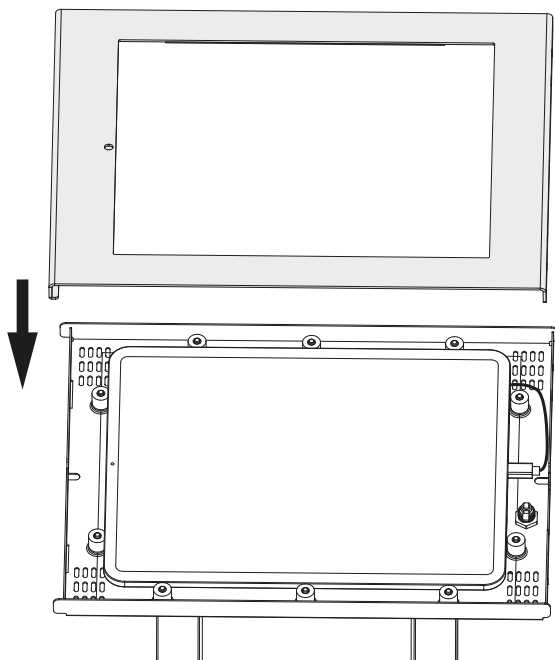
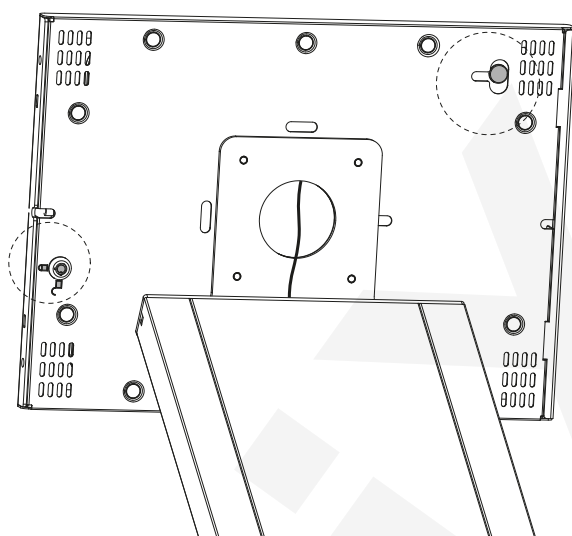
PART NO.	DESCRIPTION	QUANTITY
A	center column	1
B	side column	2
C	base	1



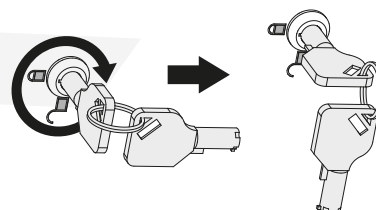
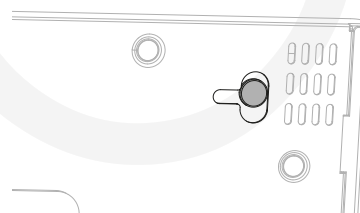
PART NO.	DESCRIPTION	QUANTITY
D	anti-theft enclosure	1
E	connector	1
F	key	2
G	M6x16	10
H	M5x6	4
I	4mm allen key	1





**5-2****5-3**

Before locking the enclosure, confirm the camera is visible through the slot as shown.

**6**