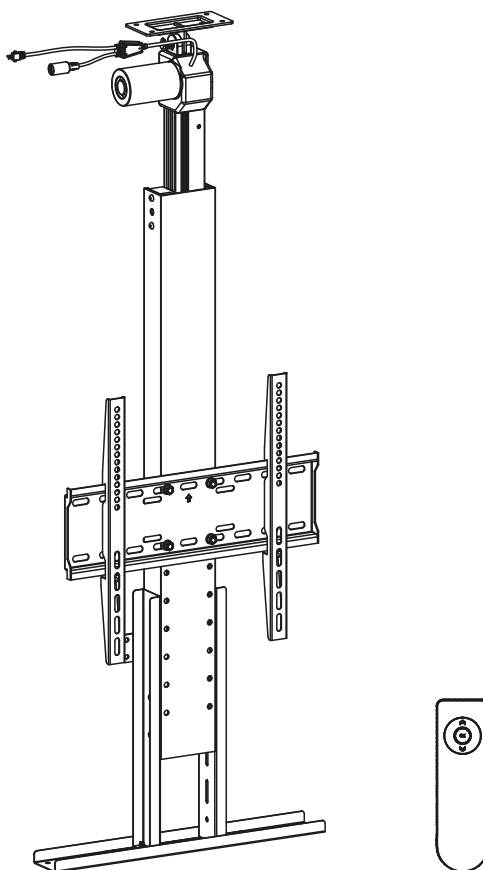



# MANUAL DE INSTALACIÓN



**SKU: LP7844M**

- EN**  Read the entire instruction manual before you start installation and assembly. If you have any questions regarding any of the instructions or warnings, please contact your local distributor for assistance.
- CAUTION:** Use with products heavier than the rated weights indicated may result in instability causing possible injury.
- Mounts must be attached as specified in assembly instructions. Improper installation may result in damage or serious personal injury.
  - Safety gear and proper tools must be used. This product should only be installed by professionals.
  - Make sure that the supporting surface will safely support the combined weight of the equipment and all attached hardware and components.
  - Use the mounting screws provided and DO NOT OVER TIGHTEN mounting screws.
  - This product contains small items that could be a choking hazard if swallowed. Keep these items away from children.
  - This product is intended for indoor use only. Using this product outdoors could lead to product failure and personal injury.
- IMPORTANT:** Ensure that you have received all parts according to the component checklist prior to installation. If any parts are missing or faulty, telephone your local distributor for a replacement.
- MAINTENANCE:** Check that the bracket is secure and safe to use at regular intervals (at least every three months).

## Preparation

### 1 What are the specifications you need to know?



Weight Capacity  
45kg (99lbs)



Power Input  
100-240V



HDMI/Component  
32"-55"



VESA  
Compatible

75x75 100x100  
100x150 150x100  
100x200 200x100  
150x150 200x200  
200x300 300x200  
200x400 400x200  
300x300 300x400  
400x300 350x350  
400x400

### 2 What are the tools you require while installation?



Tape



Allen Key  
(Included)



Crescent Wrench  
(Included)



Phillips  
Screwdriver



Drill

### 3 Things you need to know before installation

Ensure that you have received all parts according to the component checklist prior to installation. If any of the components are missing or damaged, contact your local seller for a replacement.

Now let's start the installation.



J (x1)



K (x1)



L (x4)  
M6x6



M (x4)  
M6x10



N (x4)  
M6x15



O (x4)  
D8



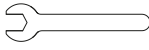
P (x4)  
M6



Q (x12)  
ST5.2x16



R (x1)



S (x1)  
13mm



T (x1)  
4mm



M-A (x4)  
M6x14



M-B (x4)  
M8x16



M-C (x4)  
M6x30



M-D (x4)  
M8x35



M-E (x4)  
D8

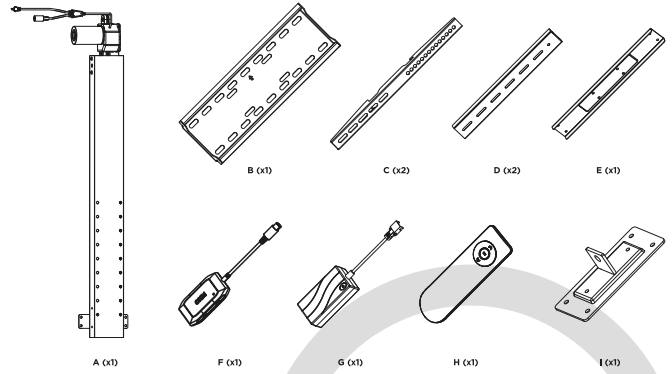


M-F (x4)  
Ø15xØ8x5



M-G (x4)  
Ø15xØ8x15

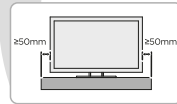
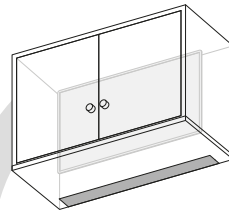
## Checklist and Installation



This page can be torn so that it's easier for you to match the components with the images.

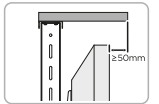
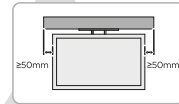
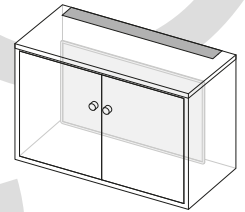
### Ceiling Mounting

⚠ Please prepare a proper cabinet before installation.



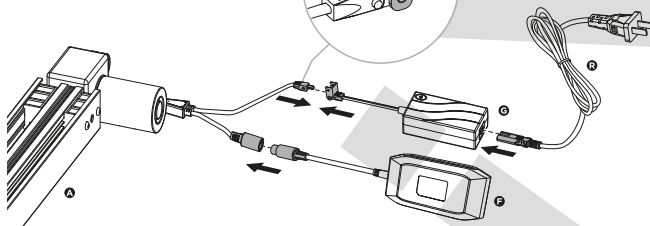
### Floor Mounting

⚠ Please prepare a proper cabinet before installation.

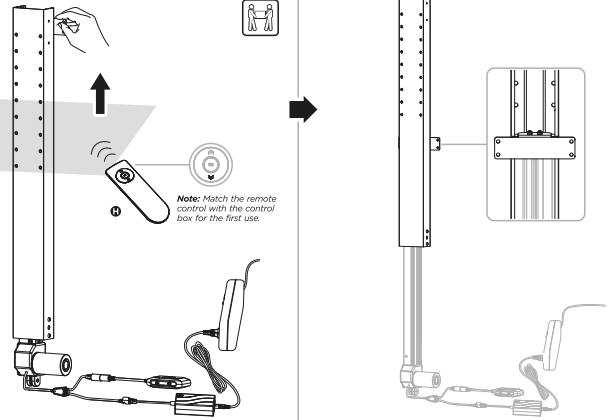


1

**Note:**  
In order to avoid collision and wire pulls, keep the control box and all cables away from the TV lift.

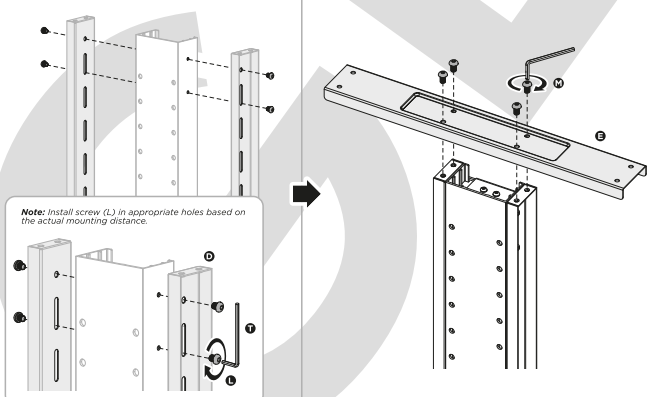


2



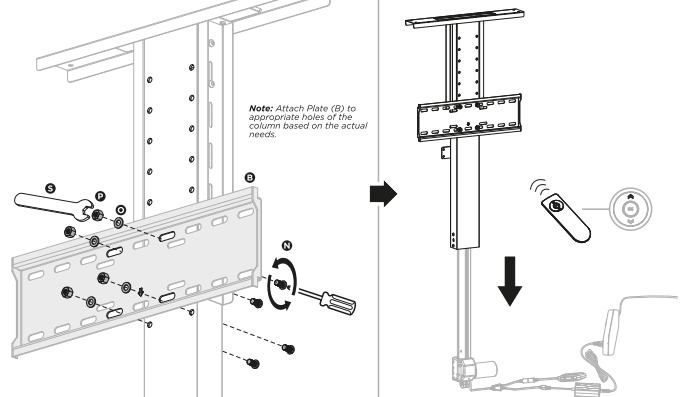
**Note:** Match the remote control with the control box for the first use.

3



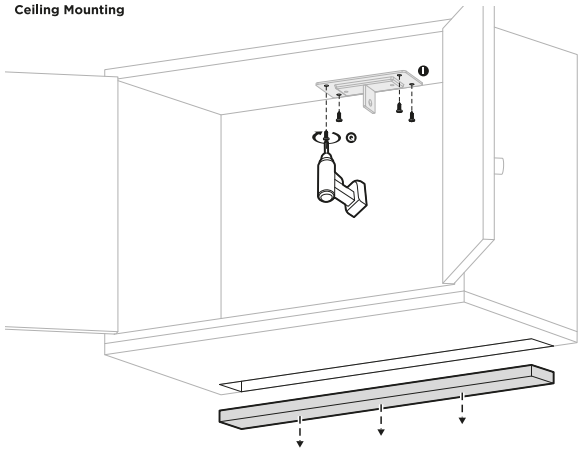
**Note:** Install screw (L) in appropriate holes based on the actual mounting distance.

4

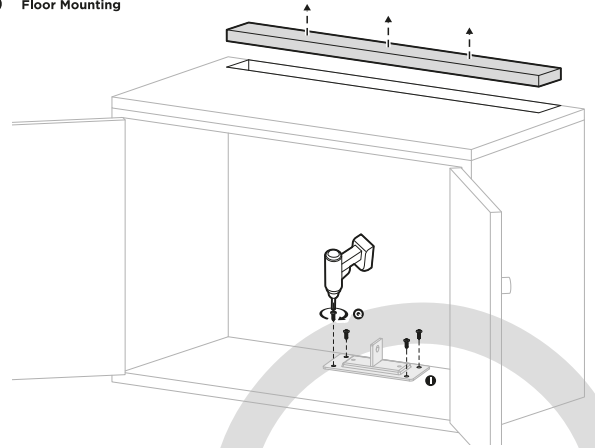


**Note:** Attach Plate (B) to appropriate holes of the column based on the actual needs.

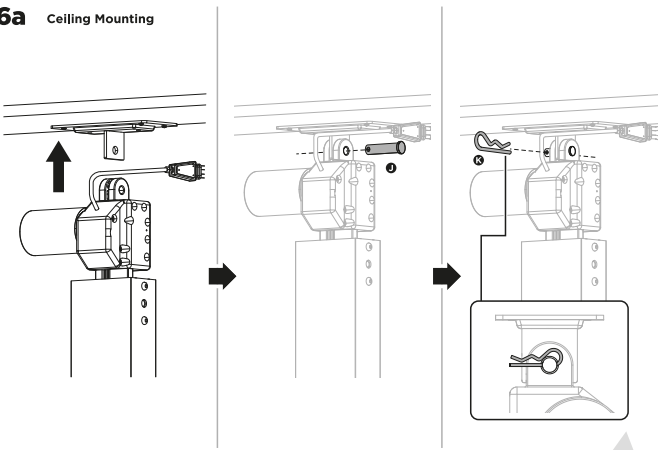
**5a** Ceiling Mounting



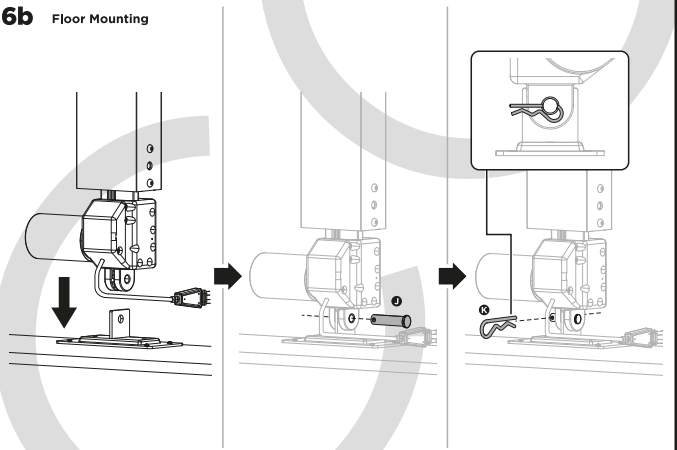
**5b** Floor Mounting



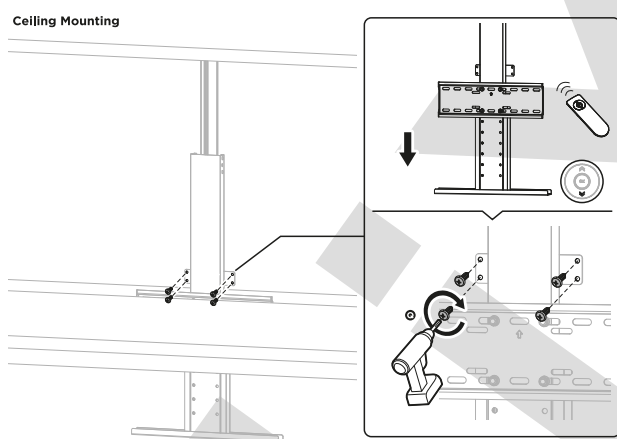
**6a** Ceiling Mounting



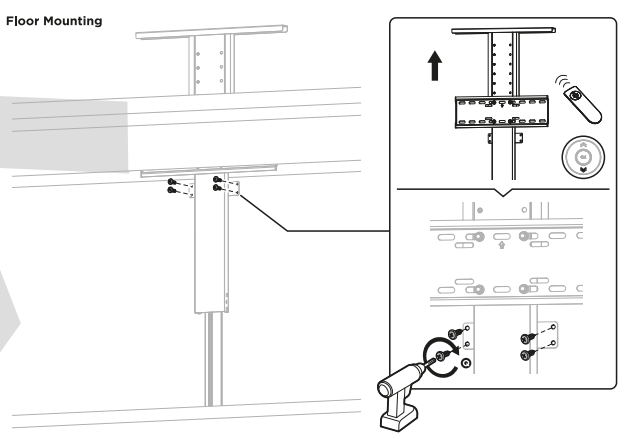
**6b** Floor Mounting



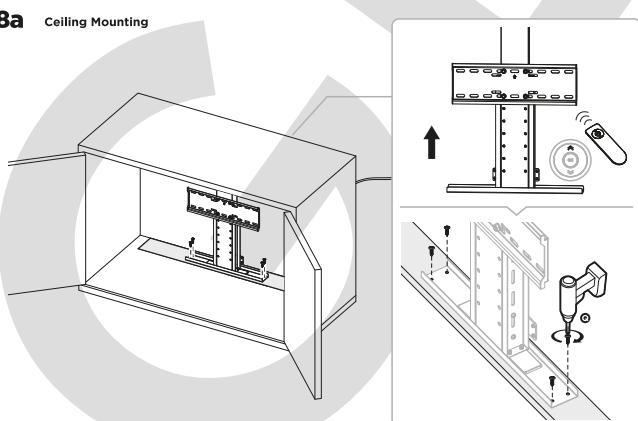
**7a** Ceiling Mounting



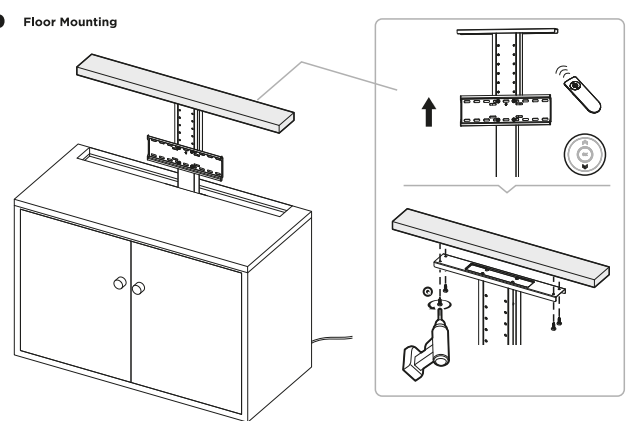
**7b** Floor Mounting



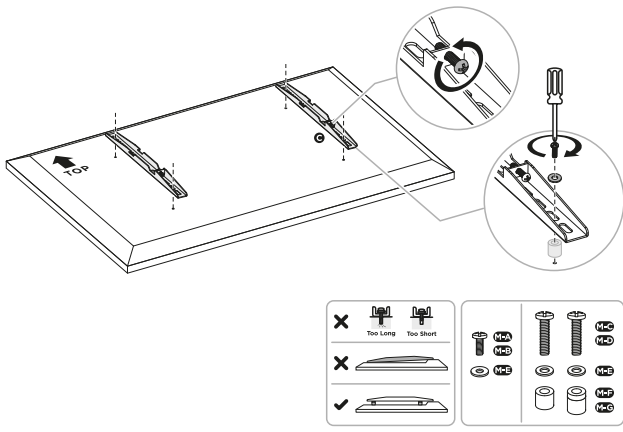
**8a** Ceiling Mounting



**8b** Floor Mounting

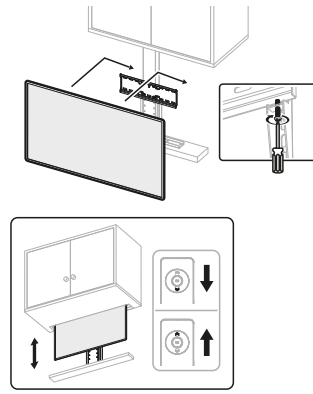


9

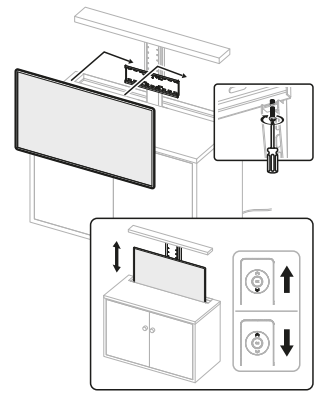


10

Ceiling Mounting



Floor Mounting



The product is powered by electricity. In order to avoid burns, fire and electric shock and make sure the safe and correct use of the system and maintain the longevity of the overall construction and the built-in electronics, please read the instructions carefully.

**Warnings**

- This appliance can be used by children aged from 8 years and above if they have been given supervision or instruction concerning use of the appliance in a safe way and understand the hazards involved. Children shall not play with the appliance. Cleaning and user maintenance shall not be made by children without supervision.
- Persons with reduced physical, sensory or mental capabilities or lack of experience and knowledge must not use the appliance, unless they're under supervision, understand the hazards involved or they have been thoroughly instructed in the use of the apparatus by a person who is responsible for the safety of these persons.
- Don't leave the cords or plug unorganized in order to prevent tripping hazards.
- Any attempts to reconstruct the construction aren't allowed.

**Electrical Safety Instructions**

- The appliance is only to be used with the power supply unit provided with the appliance. Alterations of the given power unit aren't allowed.
- Never operate the system with a damaged power supply cord or plug. If any parts is damaged, please contact your service agent of purchase for a replacement.
- Never operate the system if it's in moist environment or its electrical components has contact with liquids.
- Don't clean the product while the power is still connected.
- Don't disassemble or replace components while the power is still connected.
- Unplug the appliance when the system isn't in use, and place the power plug out of children reach.

**Remote Control Operation Instructions**



**A. Coding of Remote Control and Control Box**

- STEP1:** Double press "⏻" button of the control box to turn on the indicating light and enter program coding mode.  
**STEP2:** Press and hold "▲" + "⊙" button on the remote control to enter program coding mode with the back light flashing. Keep pressing the two buttons until the back light stops flashing and the light of control box is off indicating success.

**Note:** If program coding fails because of the timeout, repeat above steps until successful.

**B. Button Functions**

**Remote Control**

**1. Upward/Downward Movement**

- Ceiling Mounting:** Press and hold the "▲" button, and the mount will move upward. Press and hold the "▼" button, and the mount will move downward.  
**Floor Mounting:** Press and hold the "▼" button, and the mount will move upward. Press and hold the "▲" button, and the mount will move downward.

**(Note:** Clear up all obstacles within the range of motion.)

**2. Default Position**

- Ceiling Mounting:** Press the "⊙" button and the mount will automatically move upward to the default highest position.  
**Floor Mounting:** Press the "⊙" button and the mount will automatically move downward to the default lowest position.

**Control Box**

**1. Program Coding**

- Double press the "⏻" button to turn on the indicating light and enter program coding mode.

**2. Default Position**

- Ceiling Mounting:** Press and hold the "▲" button, and the mount will move upward to the default highest position.  
**Floor Mounting:** Press and hold the "▼" button, and the mount will move downward to the default lowest position.

**Note:** The remote control is powered by two AAA batteries (not included).



**Troubleshooting Guide**

**In Front**

This Troubleshooting Guide will assist you in identifying and solving common problems and answering questions you may have about the product. Contact your place of purchase should the answer to your question or problem not be found in this Troubleshooting Guide and/or for any after service parts and sales support.

**Possible reasons motorized mount does not respond to remote control.**

**TV Mount**

- The AC/DC end of the power cord may be unplugged/disconnect from the outlet/mount. Check the connection to ensure the unit has power.
- Incorrect operation. Please follow the instructions found in the manual to properly operate the mount.

**Remote Control&ControlBox**

- The remote control operating distance may be too far and not in range of the mount. Acceptable range should be less than 30 feet (10m).
- The battery in the remote control may be low or dead. Replace the batteries.
- The program coding may fail. Follow the instructions to operate coding of remote control and control box.
- The remote control, linear actuator or control box may be broken. Check to see if the indicator LED lights on when any button is pressed. If not, contact your place of purchase for a replacement.